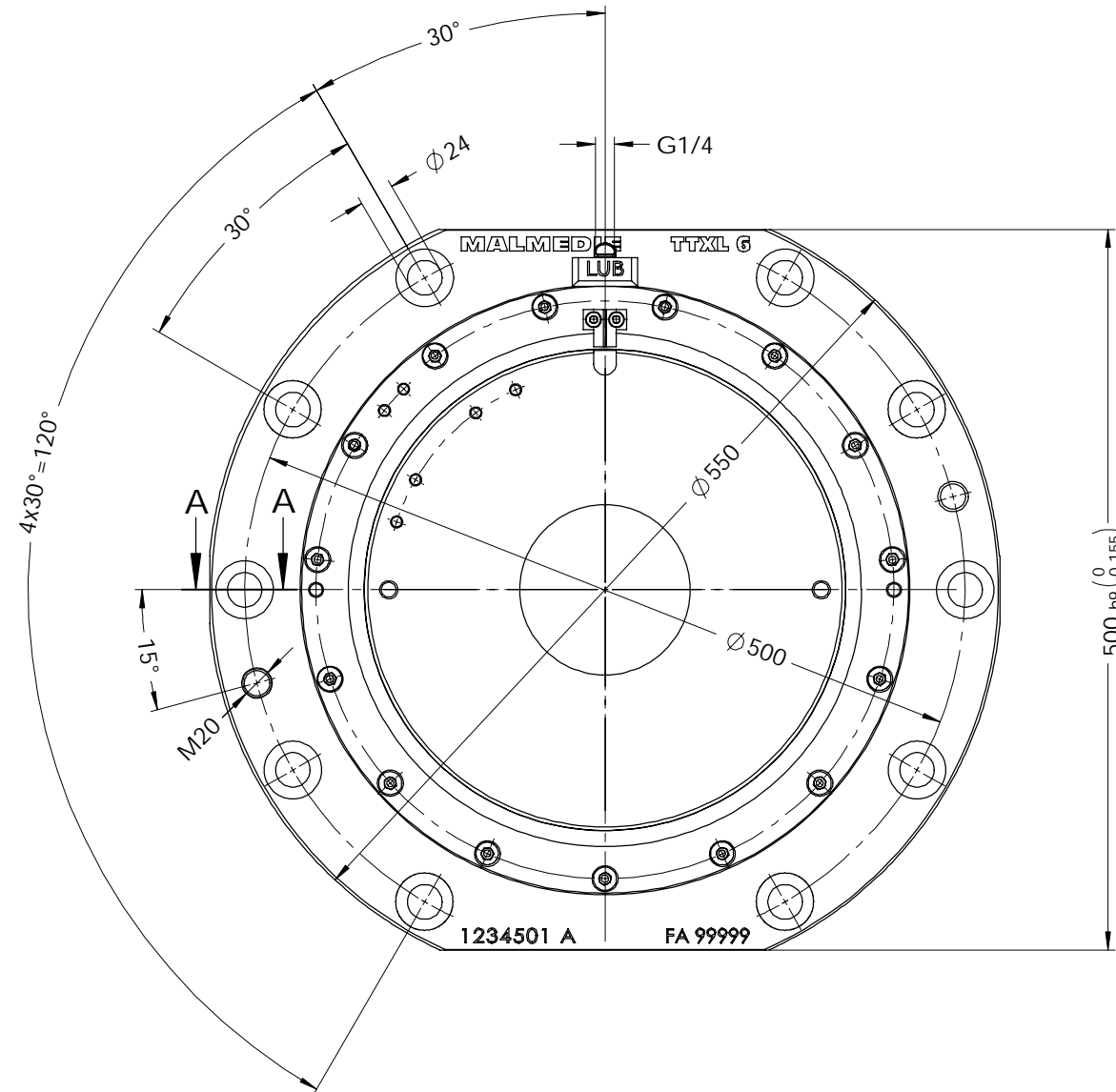
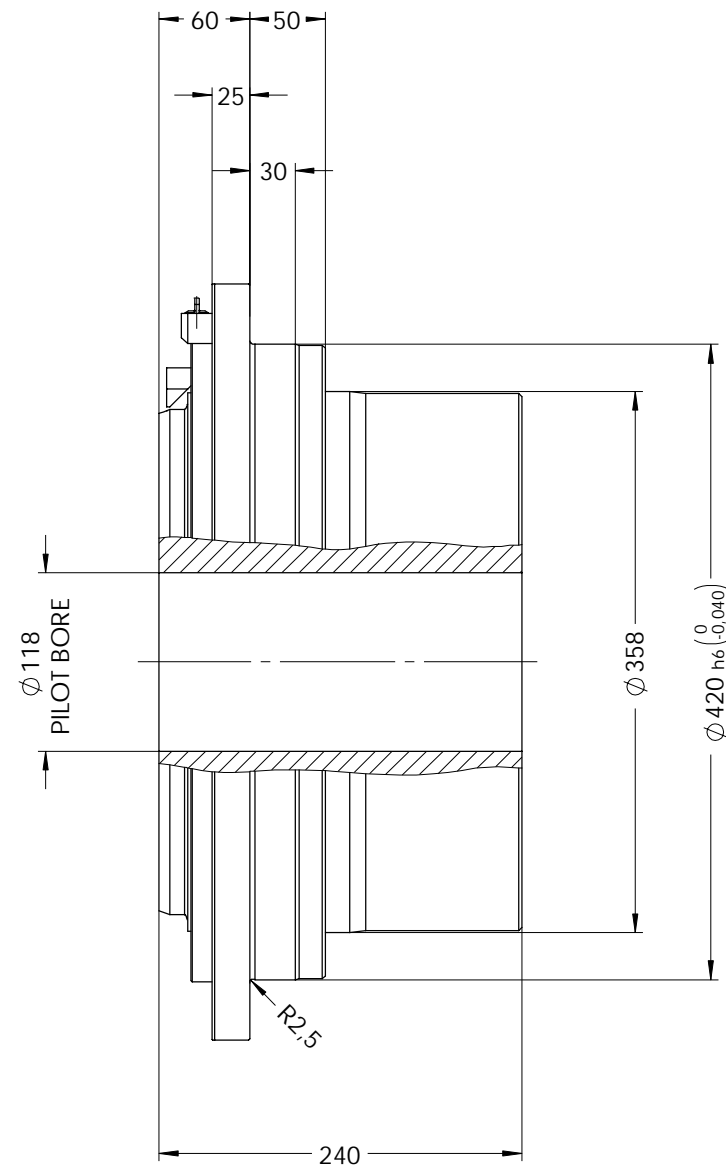
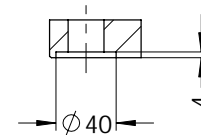




max. zul. Drehmoment  $T_{k \max} = 145000 \text{ Nm}$   
 MAX. PERMISSIBLE TORQUE  
 max. zul. Radialkraft  $F_{r \max} = 150000 \text{ N}$   
 MAX. PERMISSIBLE RADIAL LOAD



A-A



Oberflächen nach DIN ISO 1302 Indication of surfaces to DIN ISO 1302		 <b>MALMEDIE</b> Dycker Feld 28 42653 Solingen Phone: +49 (0) 212 / 258 11 - 0 Email: info@malmedie.com Internet: http://www.malmedie.com		Werkstoff / Material		Gewicht / Weight ca.	
Werkstückkanten DIN6784 Edges of working parts DIN6784				Zugfestigkeit - - - N/mm <sup>2</sup>		204 kg	
		Mindeststreckgrenze - N/mm <sup>2</sup>		4,739 kgm <sup>2</sup>		Mass moment of inertia	
Allgemeintoleranzen nach ISO 2768-mH General tolerances to ISO 2768-mH		Große / Size		Ausführung / Type			
Schutzvermerk DIN 34 beachten Interlectual property rights according to DIN34		6		TTXL			
Benennung / Designation		<b>Tonnenkupplung / DRUM COUPLING</b>					
Ersatz für Supersedes -		Datum / Date	Name	Format Size	Zeichnungs-Nr.: / Drawing-No.:	And. Index	
erstellt drawn		08.02.2022	Zimmerle	A3	665011	A	
Ersetzt durch Superseded by -		-	-	1 / 1	Maßstab Scale 1:5	Projection ISO 128	
Ursprung Origin -		-	-	-	-	Projection ISO 128	