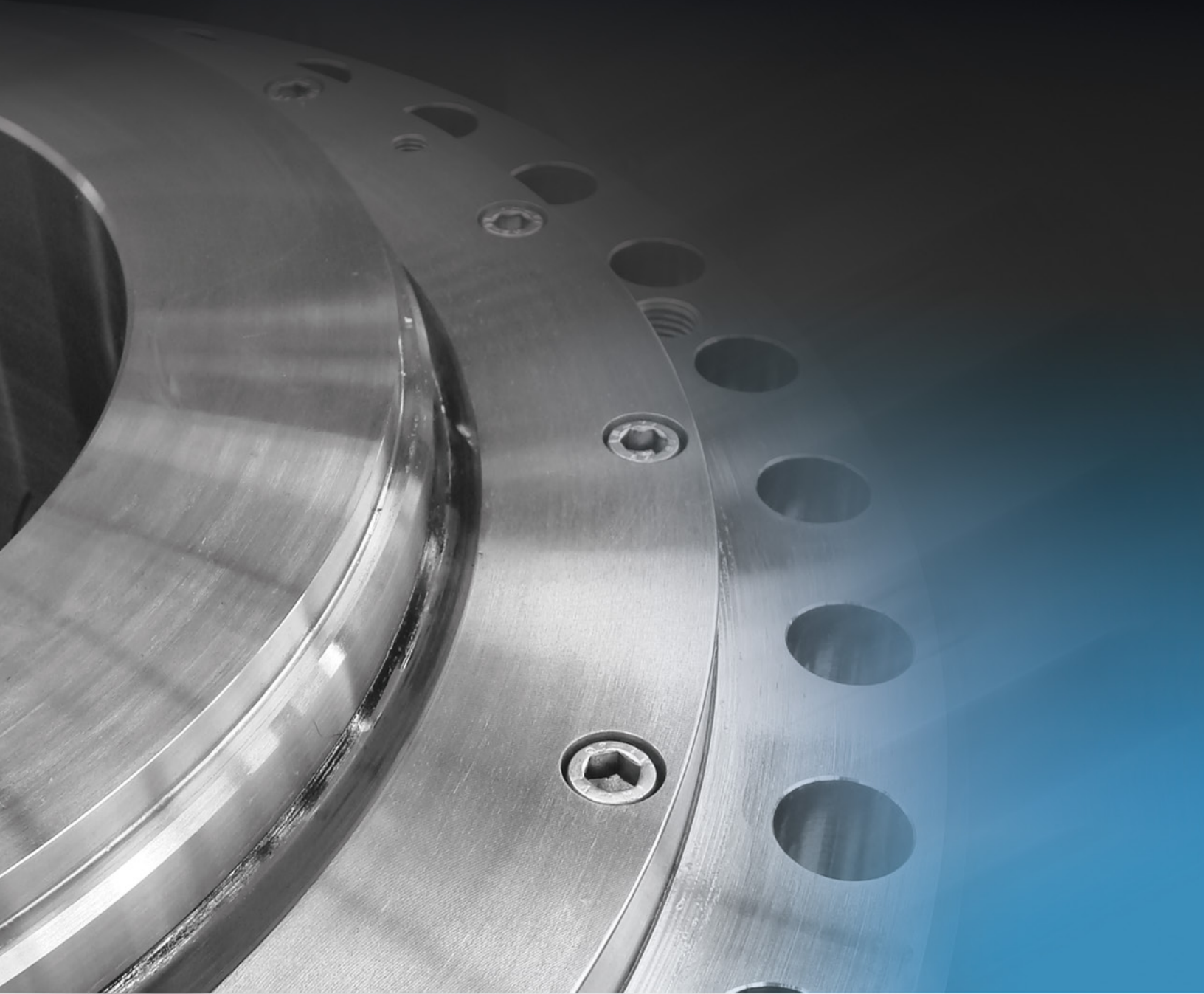


DRUM-COUPLINGS

SERIES TT



MALMEDIE.COM

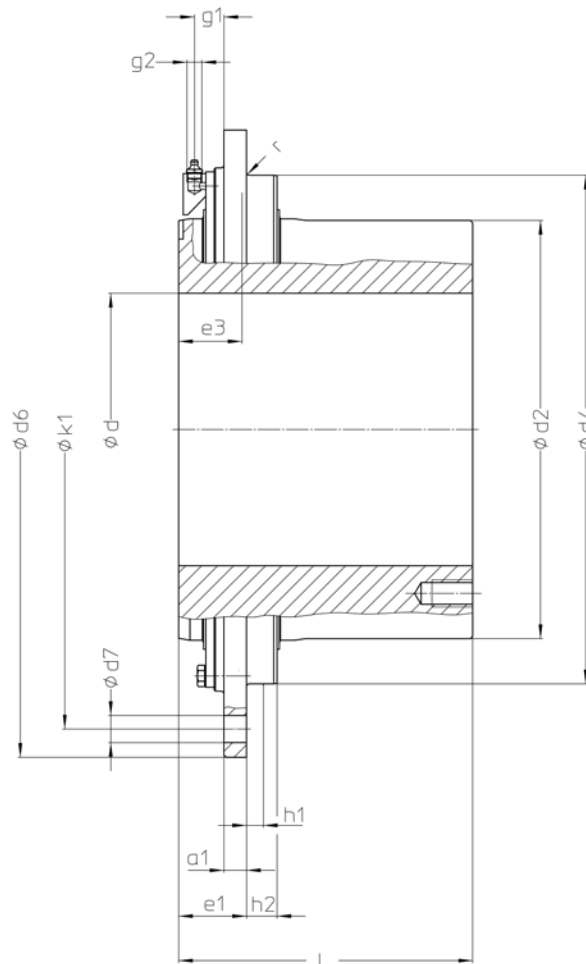


DRUM-COUPLINGS

Dimension sheet 709-07 / TT Standard

The TT series of Drum-Couplings have been specifically developed for lower capacity hoist applications. The simplified design in combination with the well-known MALMEDIE quality makes the TT series particularly suitable for e.g. yard / stacking cranes in the port industry and process cranes in the steel industry. For further dimensions, size selection, hub/shaft connections and information about drums please see the "TTXs series Drum-Coupling catalogue".

Size	Selection SEB	Torque T_{kmax} [lb-ft]	Radial load F_{rmax} [lbf]	* Weight [lb]	*Mass-moment of inertia [lb-ft ²]
2	SG 130	21,758	9,892	82	12
3	-	28,765	11,466	100	17
4	SG 140	38,354	16,861	133	27
5	-	56,793	25,853	192	50
6	SG 185	88,508	29,226	263	76
10	SG 200	125,386	32,598	349	117
15	SG 240	169,639	39,342	529	228
21	-	243,395	59,575	523	244
26	SG 270	295,025	69,691	640	316



*with max. finish bore

Size	d min. [mm]	d max. [mm]	a1 [mm]	d2 [mm]	d4 / h6 [mm]	d6 [mm]	d7 [mm]	e1 [mm]	e3 [mm]	g1 [mm]	g2* [mm]	h1 [mm]	h2 [mm]	k1 [mm]	l [mm]	r [mm]	Axial play max. ± [mm]
2	100	140	15	200	280	400	19	45	42	18,5	G1/8	15	25	360	170	2,5	4
3	100	155	15	220	310	420	19	45	42	18,5	G1/8	15	25	380	175	2,5	4
4	100	180	20	260	340	450	24	60	40	30,5	G1/8	10	-	400	185	2,5	4
5	120	210	20	300	400	510	24	60	44	28,5	G1/8	14	-	460	220	2,5	6
6	120	215	20	321	420	550	24	60	57	26	G1/4	15	28	500	240	2,5	6
10	140	245	20	373	450	580	24	60	56	26	G1/4	15	27	530	260	2,5	6
15	160	290	25	425	530	650	24	65	56	26	G1/4	15	22	600	315	2,5	6
21	170	300	25	421	545	665	24	65	66	32	G1/4	20	44	615	330	4	6
26	170	310	25	453	560	680	24	65	66	32	G1/4	20	44	630	350	4	6

* incl. taper grease nipple DIN71412 – Rc1/4, M10x1 or other lubrication pipe connections possible via adaptor