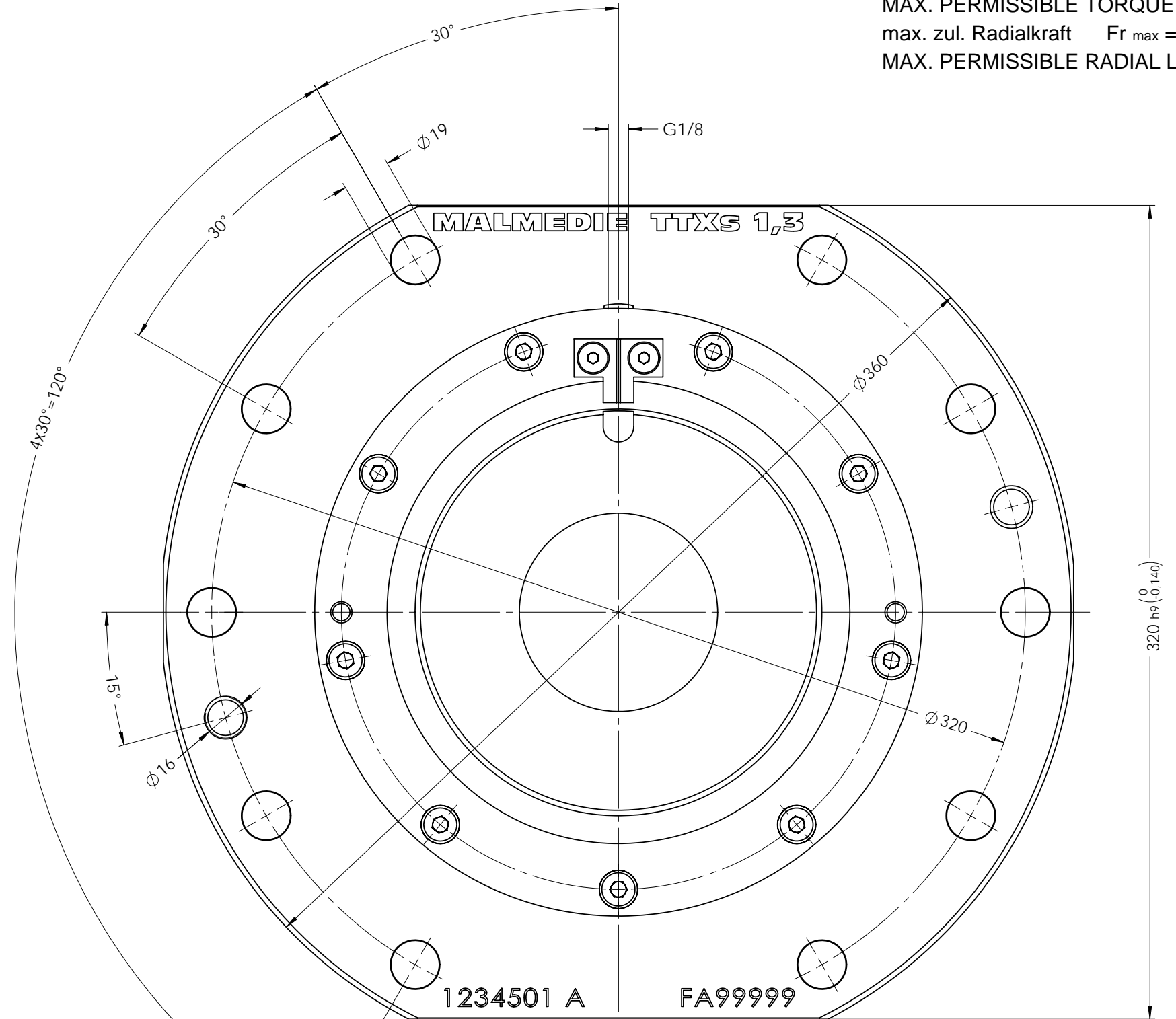
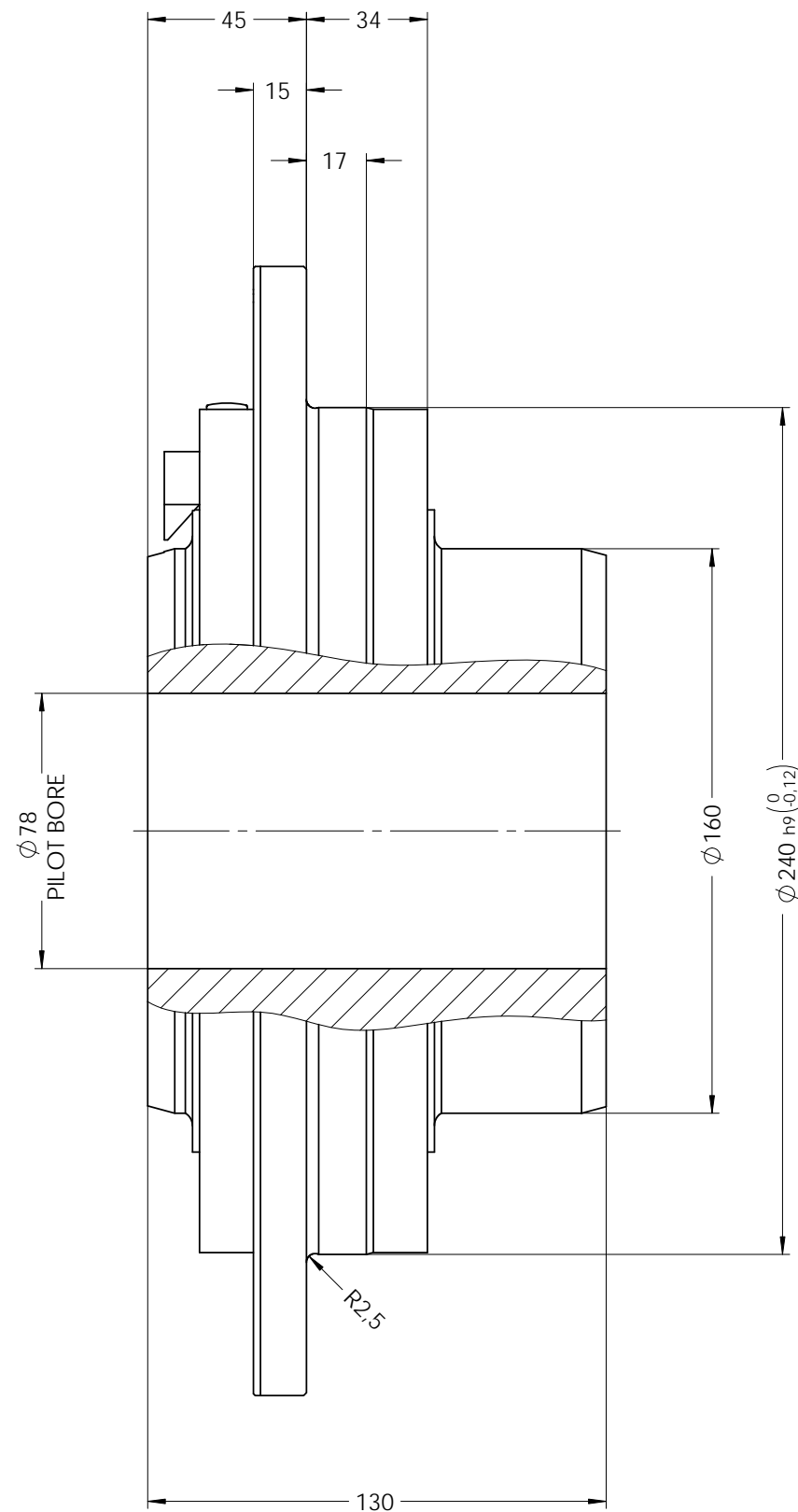
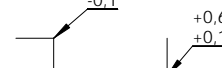



max. zul. Drehmoment $T_{k \max} = 21000 \text{ Nm}$
 MAX. PERMISSIBLE TORQUE
 max. zul. Radialkraft $F_{r \max} = 37000 \text{ N}$
 MAX. PERMISSIBLE RADIAL LOAD



Oberflächen nach DIN ISO 1302 Indication of surfaces to DIN ISO 1302 Werkstückkanten DIN6784 Edges of working parts DIN6784 	 Dycker Feld 28 42653 Solingen Phone: +49 (0) 212 / 258 11 - 0 Email: info@malmedie.com Internet: http://www.malmedie.com		Werkstoff / Material		Gewicht / Weight ca.	
			Zugfestigkeit - - - N/mm ²		Mass moment of inertia	
Allgemeintoleranzen nach ISO 2768-mH General tolerances to ISO 2768-mH		Mindeststreckgrenze - N/mm ²		0.32 kgm ²		
Schutzvermerk DIN 34 beachten Interlectual property rights according to DIN34		Große / Size		Ausführung / Type		
		1,3		TTXs		
Benennung / Designation						
Tonnenkupplung / DRUM COUPLING						
Ersatz für Supersedes		Datum / Date	Name	Format Size	Zeichnungs-Nr. / Drawing-No.	And. Index
-		01.02.2009	Zimmerle	A3	656005	A
Ersatz durch Superseded by		geändert modified	-	-	-	-
-		Norm Stand	-	1 / 1	Maßstab Scale 1:2	Projection ISO 128